



Roasted Meals for Dogs



FRESHPET® SELECT FRESH FROM THE KITCHEN™ HOME COOKED CHICKEN RECIPE

Available in
1.75lb, 4.75lb
resealable pouch
Meets AAFCO nutritional
requirements for Adult
Maintenance



GUARANTEED ANALYSIS

Crude Protein (min)	17.0%
Crude Fat (min)	6.0%
Crude Fiber (max)	1.0%
Moisture (max)	66.0%

Ingredients: Chicken, Cranberries, Carrots, Pea Protein, Pea Fiber, Ground Oats, Natural Flavors, Vinegar, Carrageenan, Cassia Gum, Salt, Potassium Chloride, Spinach, Minerals (Zinc Proteinate, Iron Proteinate, Copper Proteinate, Manganese Proteinate, Sodium Selenite, Calcium Iodate), Vitamins (Choline Chloride, Vitamin E Supplement, Vitamin A Supplement, Biotin, Thiamine Mononitrate, Riboflavin, Niacin, Pyridoxine Hydrochloride, Calcium Pantothenate, Vitamin B12 Supplement, Vitamin D3 Supplement, Folic Acid).

Calorie Content (calculated):

Metabolizable Energy (ME)

1,466 kcal / kg • 665 kcal /

lb • 169 kcal / cup

This 794 g bag contains
approximately 7 cups of food.

This 2.04 kg bag contains
approximately 17 3/4 cups of
food.



FEEDING GUIDELINES

Depending on the age, activity level and condition of your dog, the feeding guidelines will need to be adjusted. The normal daily feeding amount for a healthy adult dog:

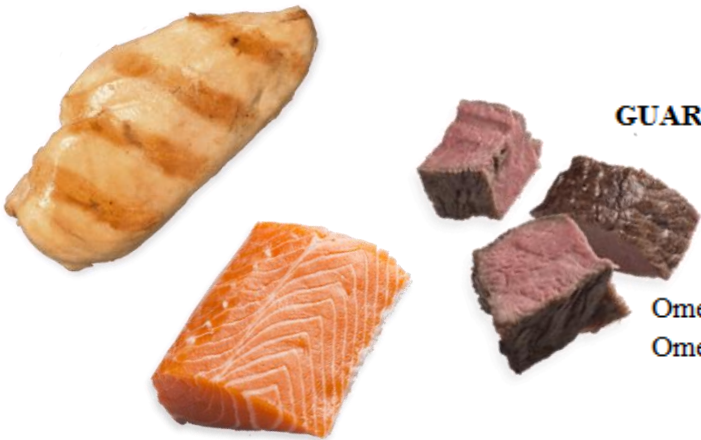
These quantities can be fed as one meal or divided into two meals based on your dog's preference. When switching foods, gradually increase the new food and decrease the previous food to help make a smooth transition. Visit your veterinarian regularly to maintain your pet's health. Always provide fresh water.

Dog's Weight	Cups*
1.8 - 5 kg	177 - 295 mL
5.1 - 9 kg	295 - 532 mL
9.1 - 16 kg	532 - 769 mL
16.1 - 23 kg	769 - 1005 mL
23.1 - 30 kg	1005 - 1242 mL
+9 kg	+236 mL

*Using standard 250 mL measuring cup

FRESHPET® SELECT MULTI-PROTEIN COMPLETE MEAL: CHICKEN, BEEF, EGG & SALMON RECIPE FOR DOGS

Available in
1.75lb, 3lb bag
Meets AAFCO requirements
for All Life Stages including
growth of large size dogs



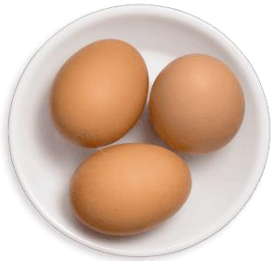
GUARANTEED ANALYSIS

- Crude Protein (min)
- Crude Fat (min)
- Crude Fiber (max)
- Moisture (max)
- Omega 3 Fatty Acids* (min)
- Omega 6 Fatty Acids* (min)

14.5%
10.0%
1.5%
65.0%
0.2%
2.0%
*Not recognized as an essential nutrient by the AAFCO Dog Food Nutrient Profiles

Ingredients: Chicken, Beef, Beef Liver, Eggs, Ground Oats, Salmon, Rice Bran, Sweet Potatoes, Natural Flavors, Carrots, Green Beans, Pea Fiber, Spinach, Salt, Vinegar, Minerals (Zinc Proteinate, Iron Proteinate, Copper Proteinate, Manganese Proteinate, Sodium Selenite, Calcium Iodate), Vitamins (Choline Chloride, Vitamin E Supplement, Riboflavin, Biotin, Calcium Pantothenate, Niacin, Thiamine Mononitrate, Vitamin B12 Supplement, Pyridoxine Hydrochloride, Folic Acid), Celery Powder.

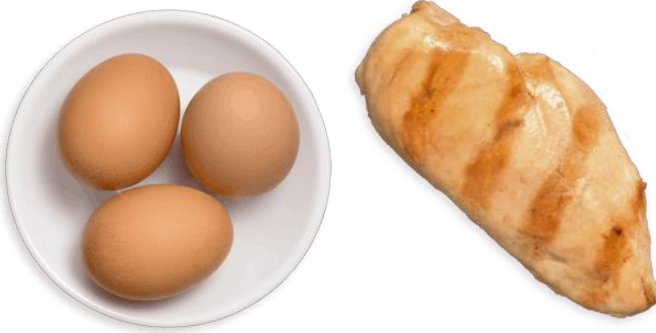
Calorie Content (calculated): Metabolizable Energy (ME)
1,828 kcal / kg • 829 kcal / lb • 249 kcal / cup
This 1.36 kg bag contains approximately 10 cups of food.



FEEDING GUIDELINES	Depending on the age, activity level and condition of your dog, the feeding guidelines will need to be adjusted. The	Cups*
	*Using standard 8 oz measuring cup	118 - 236 mL
		236 - 355 mL
		355 - 532 mL
		532 - 710 mL
		710 - 868 mL
		+ 158 mL
For pregnant females, gradually increase the food offered during the last four weeks of gestation up to 40% over the normal adult requirement. For lactating females, offer two to three times the normal adult requirement. For puppies, feed up to twice the normal adult requirement from four to fourteen months of age in two to three feedings. The above quantities can be fed as one meal or divided into two meals based on your dog's preference. When switching foods, gradually increase the new food and decrease the previous food to help make a smooth transition. Visit your veterinarian regularly to maintain your pet's health. Always provide fresh water.		

FRESHPET® SELECT ROASTED MEALS® TENDER CHICKEN RECIPE WITH GARDEN VEGETABLES FOR DOGS

Available in
1.75lb, 5.5lb bag
Meets AAFCO requirements
for Adult Maintenance



GUARANTEED ANALYSIS

Crude Protein (min)	14.0%
Crude Fat (min)	11.0%
Crude Fiber (max)	1.5%
Moisture (max)	64.0%

Ingredients: Chicken, Chicken Liver, Ground Oats, Rice Bran, Eggs, Carrots, Natural Flavors, Spinach, Salt, Vinegar, Beta-Carotene, Minerals (Zinc Proteinate, Iron Proteinate, Copper Proteinate, Manganese Proteinate, Sodium Selenite, Calcium Iodate), Vitamins (Choline Chloride, Vitamin E Supplement, Riboflavin, Biotin, Calcium Pantothenate, Niacin, Thiamine Mononitrate, Vitamin B12 Supplement, Pyridoxine Hydrochloride, Folic Acid), Celery Powder.



Calorie Content (calculated): Metabolizable Energy (ME)
1,651 kcal / kg • 749 kcal / lb • 234 kcal / cup
This 1.75 lb bag contains approximately 5.6 cups of food.

FEEDING GUIDELINES

Depending on the age, activity level and condition of your dog, the feeding guidelines will need to be adjusted. The normal daily feeding amount for a healthy adult dog:

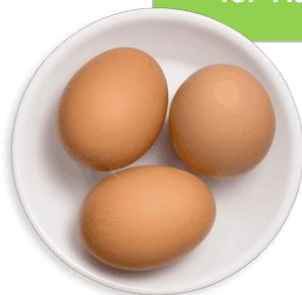
The above quantities can be fed as one meal or divided into two meals based on your dog's preference. When switching foods, gradually increase the new food and decrease the previous food to help make a smooth transition. Visit your veterinarian regularly to maintain your pet's health. Always provide fresh water.

Dog's Weight	Cups*
4 - 10 lbs	1/2 - 3/4
11 - 20 lbs	3/4 - 1 1/3
21 - 35 lbs	1 1/3 - 2
36 - 50 lbs	2 - 2 2/3
51 - 65 lbs	2 2/3 - 3 1/4
+25 lbs	+2/3 cup

*Using standard 8 oz measuring cup

FRESHPET® SELECT ROASTED MEALS® GRAIN FREE CHICKEN RECIPE WITH GARDEN VEGETABLES FOR DOGS

Available in
1.75lb bag
Meets AAFCO requirements
for Adult Maintenance



GUARANTEED ANALYSIS

Crude Protein (min)	16.0%
Crude Fat (min)	10.0%
Crude Fiber (max)	2.0%
Moisture (max)	65.0%



Ingredients: Chicken, Chicken Liver, Eggs, Pea Protein, Pea Fiber, Carrots, Natural Flavors, Spinach, Vinegar, Salt, Carrageenan, Beta-Carotene, Minerals (Zinc Proteinate, Iron Proteinate, Copper Proteinate, Manganese Proteinate, Sodium Selenite, Calcium Iodate), Vitamins (Choline Chloride, Vitamin E Supplement, Riboflavin, Biotin, Calcium Pantothenate, Niacin, Thiamine Mononitrate, Vitamin B12 Supplement, Pyridoxine Hydrochloride, Folic Acid), Potassium Chloride, Celery Powder.

Calorie Content (calculated): Metabolizable Energy (ME)

1,651 kcal / kg • 749 kcal / lb • 234 kcal / cup

This 1.75 lb bag contains approximately 5.6 cups of food.



FEEDING GUIDELINES

Depending on the age, activity level and condition of your dog, the feeding guidelines will need to be adjusted. The normal daily feeding amount for a healthy adult dog:

The above quantities can be fed as one meal or divided into two meals based on your dog's preference. When switching foods, gradually increase the new food and decrease the previous food to help make a smooth transition. Visit your veterinarian regularly to maintain your pet's health. Always provide fresh water.

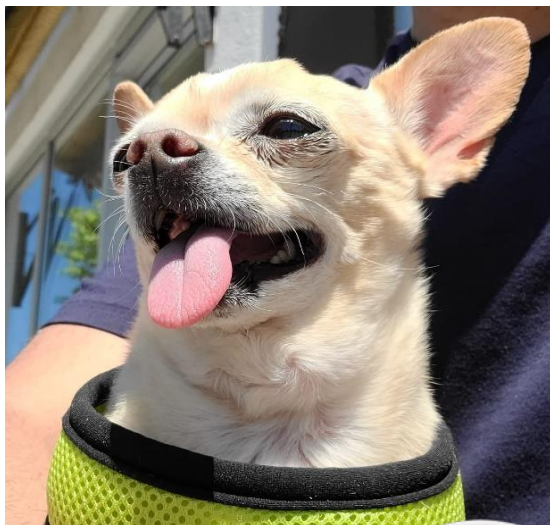
Dog's Weight	Cups*
4 - 10 lbs	1/2 - 1
11 - 20 lbs	1 - 1 1/2
21 - 35 lbs	1 1/2 - 2 1/4
36 - 50 lbs	2 1/4 - 3
51 - 65 lbs	3 - 3 1/2
+25 lbs	+1 cup

*Using standard 8 oz measuring cup

FRESHPET® SELECT SMALL DOG BITE SIZE CHICKEN RECIPE

Available in
1lb bag

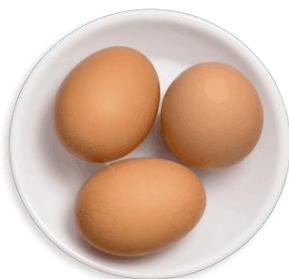
Meets AAFCO requirements
for all life stages, except for
growth of large size dogs



GUARANTEED ANALYSIS

Crude Protein (min)	16.0%
Crude Fat (min)	12.0%
Crude Fiber (max)	1.5%
Moisture (max)	63.0%

Ingredients: Chicken, Chicken Liver, Carrots, Pea Protein, Eggs, Cranberries, Natural Flavors, Pea Fiber, Vinegar, Minerals (Dicalcium Phosphate, Zinc Proteinate, Iron Proteinate, Copper Proteinate, Manganese Proteinate, Sodium Selenite, Calcium Iodate), Salt, Spinach, Potassium Chloride, Fish Oil, Inulin, Beta-Carotene, Celery Powder, Vitamins (Choline Chloride, Vitamin E Supplement, Riboflavin, Biotin Calcium Pantothenate, Niacin, Thiamine Mononitrate, Vitamin B12 Supplement, Pyridoxine Hydrochloride, Folic Acid).



Calorie Content (calculated): Metabolizable Energy (ME)
1,902 kcal / kg • 863 kcal / lb • 262 kcal / cup
This 454 g bag contains approximately 3.3 cups of food.

FEEDING GUIDELINES

Depending on the age, activity level and condition of your dog, the feeding guidelines will need to be adjusted. The normal daily feeding amount for a healthy adult dog:

The above quantities can be fed as one meal or divided into two meals based on your dog's preference. For pregnant females, gradually increase the food offered during the last four week of gestation up to 40% over the normal adult requirement. For

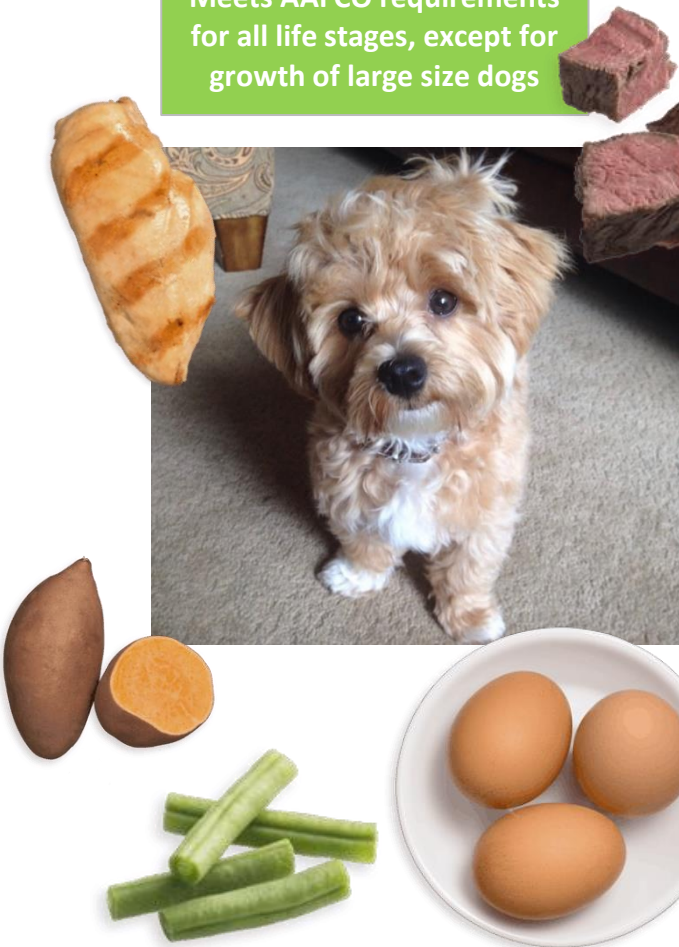
puppies, feed up to twice the normal adult requirement from four to fourteen months of age in two to three feedings. When switching foods, gradually increase the new food and decrease the previous food to help make a smooth transition. Visit your veterinarian regularly to maintain your pet's health. Always provide fresh water.

Dog's Weight	Cups*
4 - 10 lbs	2/3 - 1
10 - 15 lbs	1 - 1 1/2
15 - 20 lbs	1 1/2 - 2
20 - 25 lbs	2 - 2 1/4
+5 lbs	+1/2 cup

*Using standard 8 oz measuring cup

FRESHPET® SELECT SMALL DOG BITE SIZE BEEF & EGG RECIPE

Available in
1lb bag
Meets AAFCO requirements
for all life stages, except for
growth of large size dogs



GUARANTEED ANALYSIS

Crude Protein (min)	16.0%
Crude Fat (min)	10.0%
Crude Fiber (max)	1.5%
Moisture (max)	63.0%

Ingredients: Beef, Chicken, Beef Liver, Lentils, Eggs, Green Beans, Sweet Potatoes, Carrots, Pea Fiber, Natural Flavors, Spinach, Vinegar, Cultured Dextrose, Salt, Fish Oil, Celery Powder, Minerals (Zinc Protein, Iron Protein, Copper Protein, Manganese Protein, Sodium Selenite, Calcium Iodate), Vitamins (Choline Chloride, Vitamin E Supplement, Riboflavin, Biotin, Calcium Pantothenate, Niacin, Thiamine Mononitrate, Vitamin B12 Supplement, Pyridoxine Hydrochloride,

Calorie Content (calculated): Metabolizable Energy (ME)
1,733 kcal / kg • 786 kcal / lb • 262 kcal / cup
This 1 lb bag contains approximately 3 cups of food.

FEEDING GUIDELINES

Depending on the age, activity level and condition of your dog, the feeding guidelines will need to be adjusted. The normal daily feeding amount for a healthy adult dog:

The above quantities can be fed as one meal or divided into two meals based on your dog's preference. For pregnant females, gradually increase the food offered during the last four week of gestation up to 40% over the normal adult requirement. For

puppies, feed up to twice the normal adult requirement from four to fourteen months of age in two to three feedings. When switching foods, gradually increase the new food and decrease the previous food to help make a smooth transition. Visit your veterinarian regularly to maintain your pet's health. Always provide fresh water.

Dog's Weight	Cups*
4 - 10 lbs	2/3 - 1
10 - 15 lbs	1 - 1 1/2
15 - 20 lbs	1 1/2 - 2
20 - 25 lbs	2 - 2 1/4
+5 lbs	+1/2 cup
*Using standard 8 oz measuring cup	